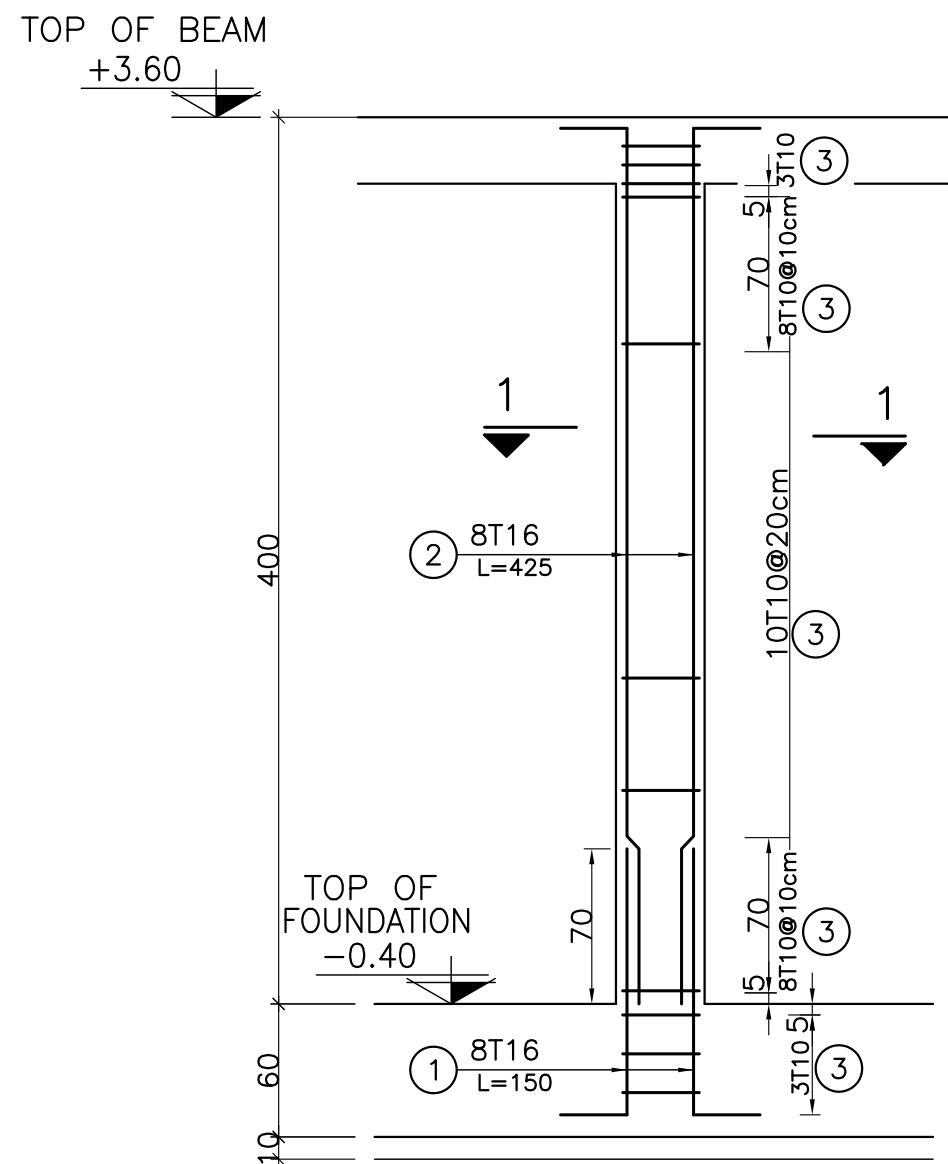


COLUMN LOCATION PLAN

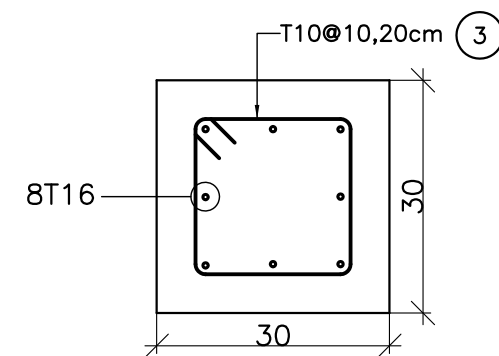
SC. 1:100



COLUMN C1

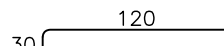
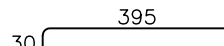
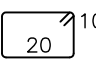
SC. H.1:35

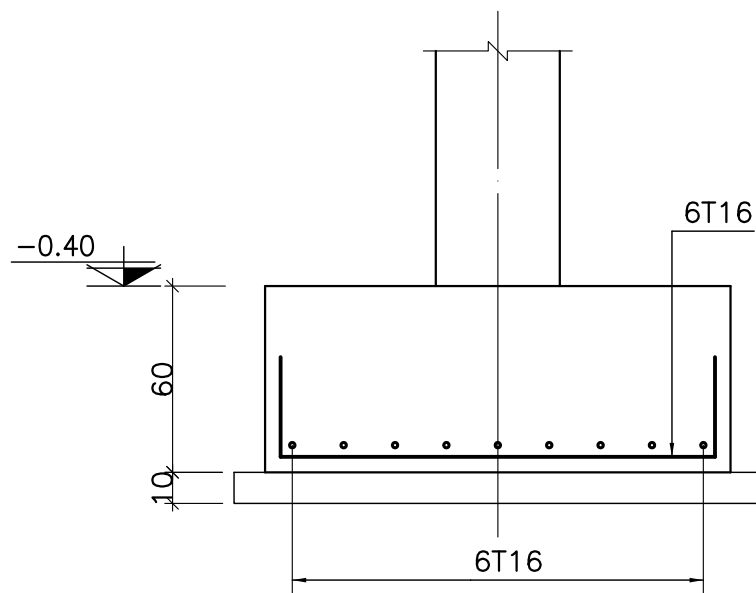
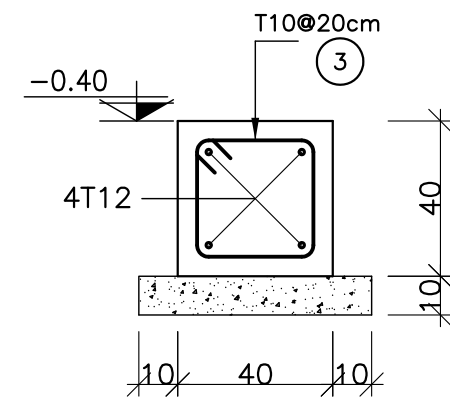
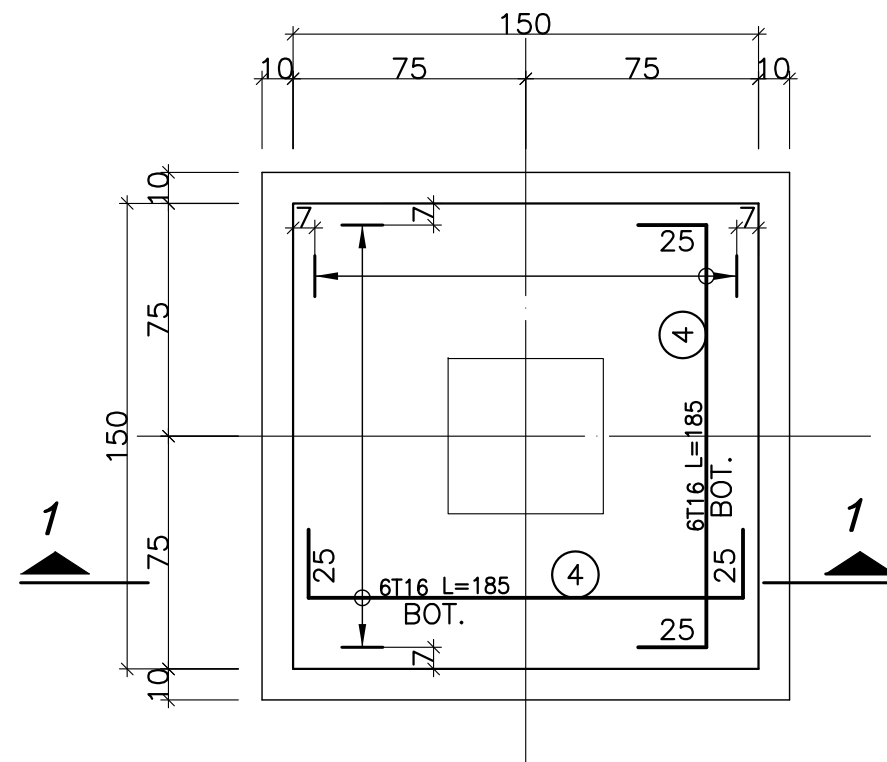
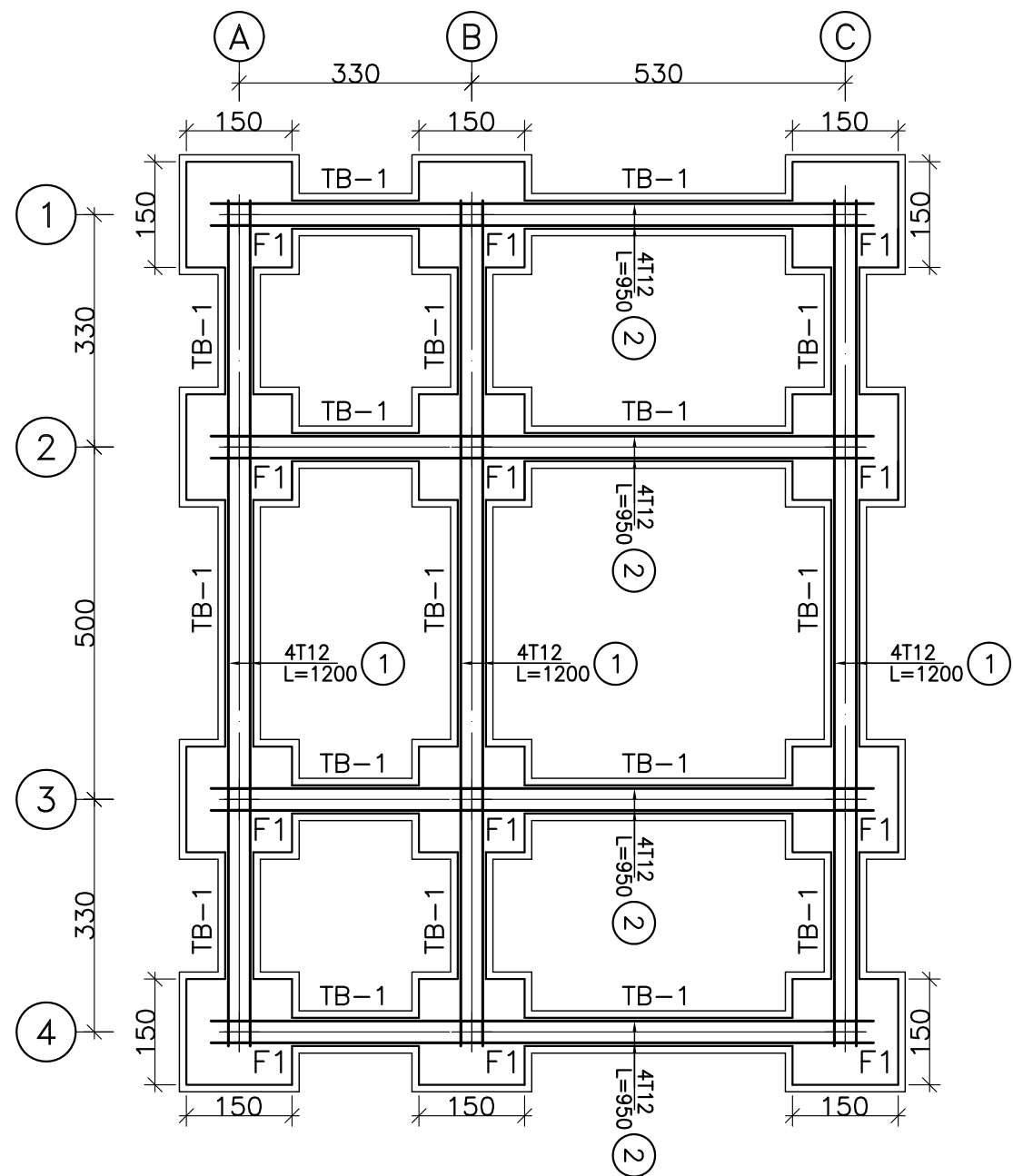
NO.=12



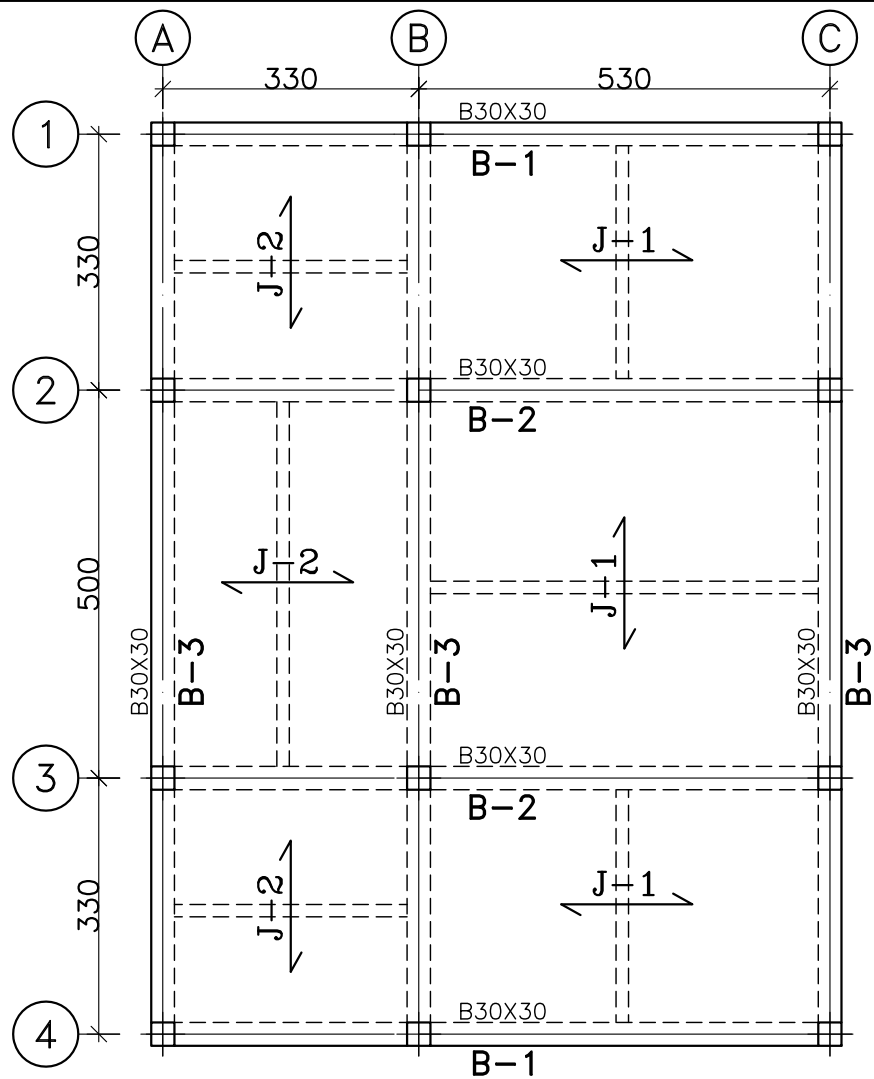
SECTION 1-1

SC. 1:10

Pos	Ø	Shape	L/A	No.	T10	T16
1	T16	30  120	1.5	96		144
2	T16	30  395	4.25	96		408
3	T10	20  10	1	384	384	
TOTAL LENGTH OR AREA (m)					384	552
UNIT WEIGTH (Kg)					0.617	1.578
WEIGTH (Kg)					236.93	871.06
GRAND TOTAL (Kg)					1108 Kg.	

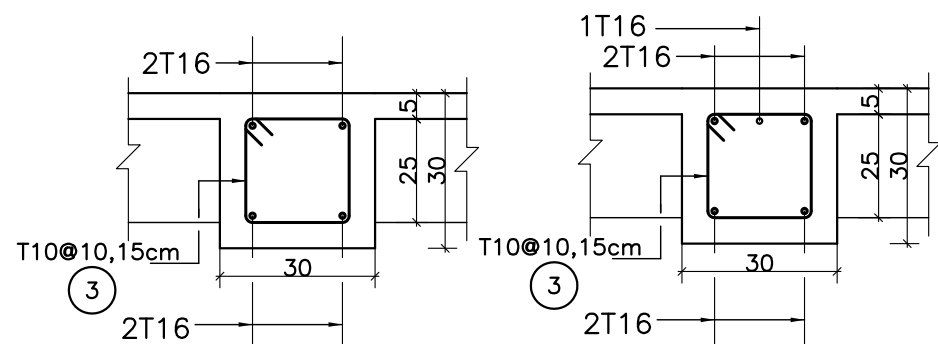


Pos	Ø	Shape	L/A	No.	T10	T12	T16
1	T12	1200	12	12		144	
2	T12	950	9.5	16		152	
3	T10	30 30 10	1.4	219	306.6		
4	T16	25 135 25	1.85	144			266.4
TOTAL LENGTH OR AREA (m/m2)					306.6	296	266.4
UNIT WEIGTH (Kg)					0.617	0.888	1.578
WEIGTH (Kg)					189.17	262.85	420.38
GRAND TOTAL (Kg)					872 Kg.		



FRAMING LOCATION PLAN

SC. 1:100

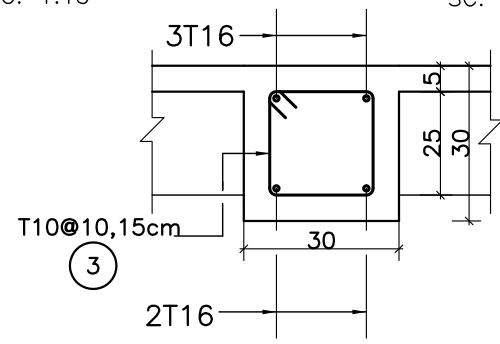


SEC. "1"

SC. 1:15

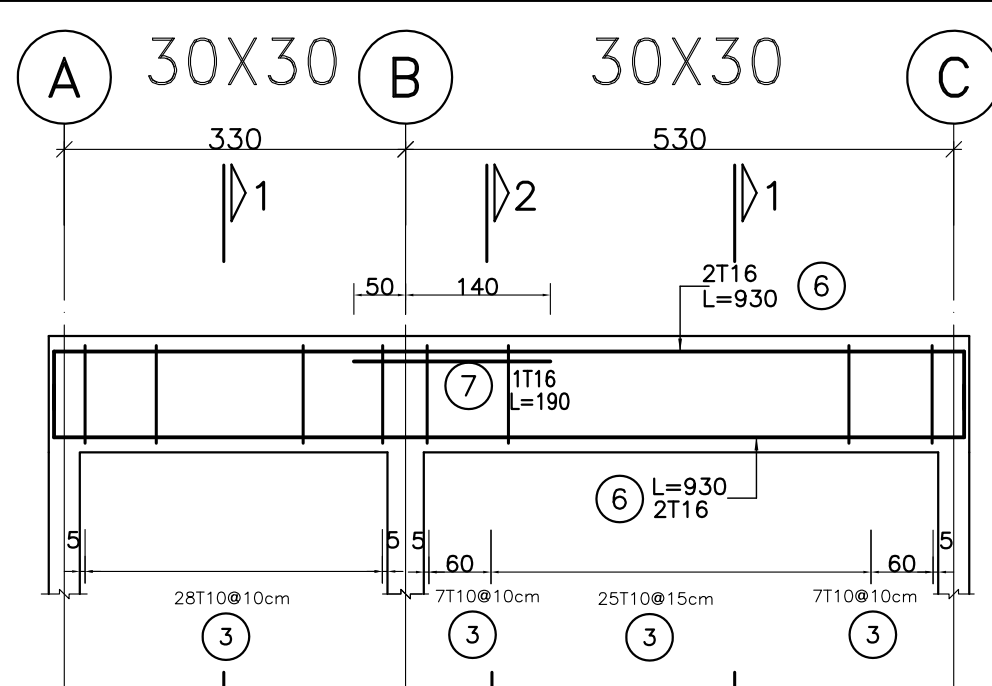
SEC. "2"

SC. 1:15



SEC. "3"

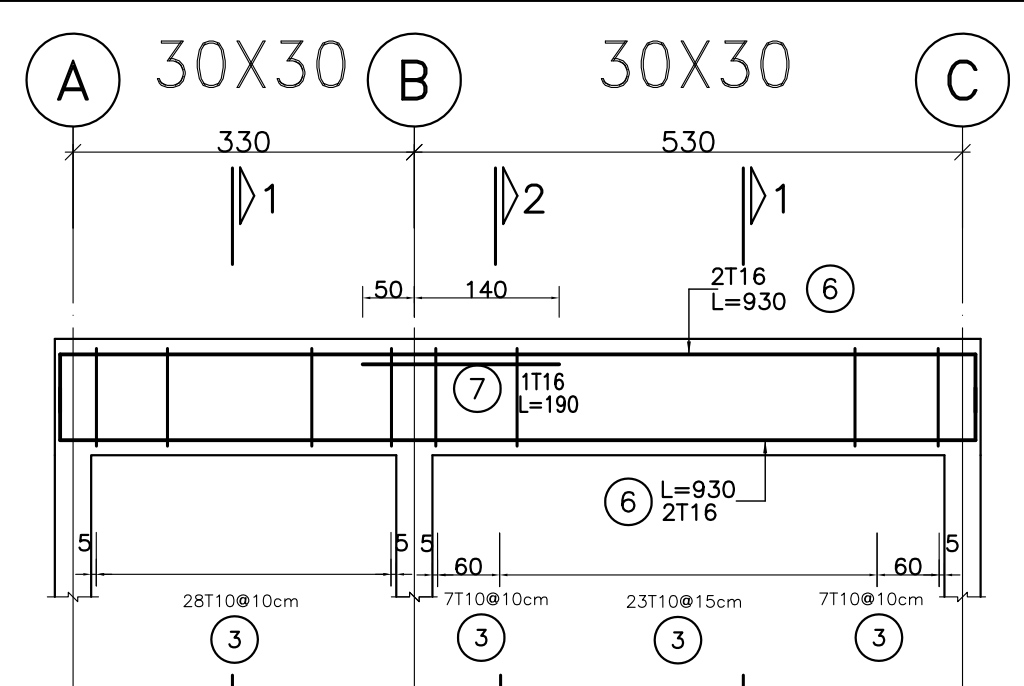
SC. 1:15



BEAM TYPE B-1

SC. H-1:75 V-1:20

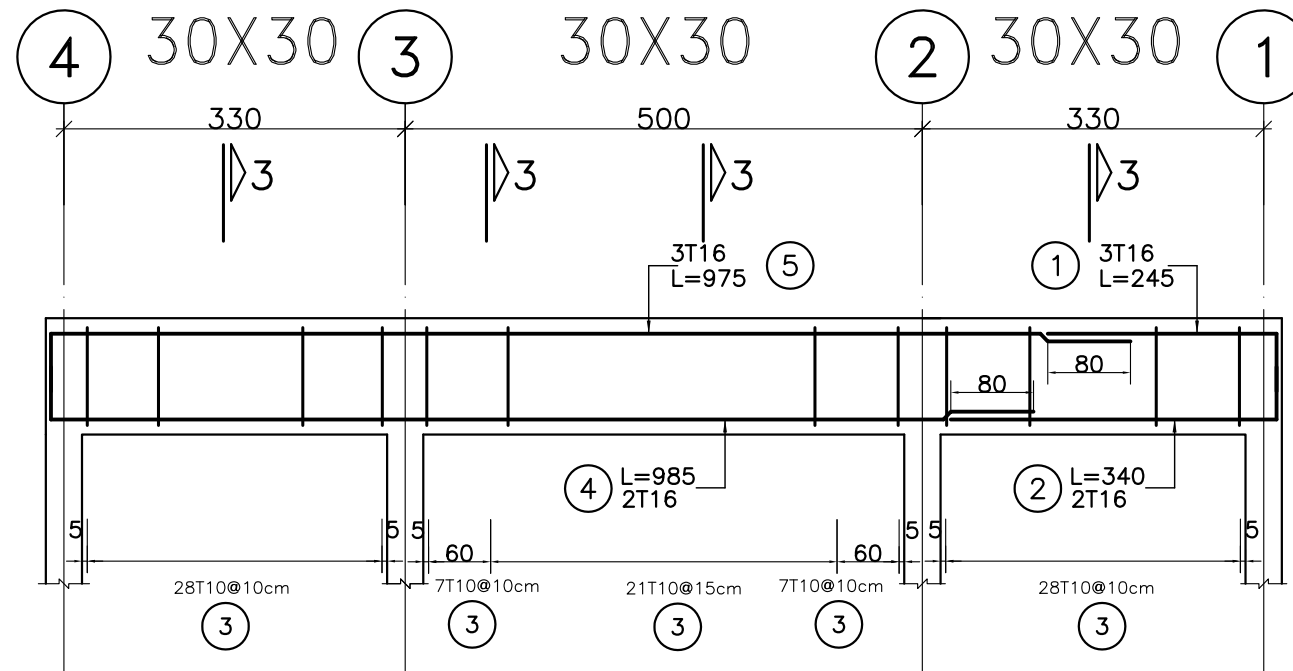
NO.=2



BEAM TYPE B-2

SC. H-1:75 V-1:20

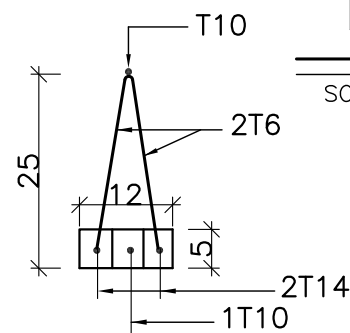
NO.=2



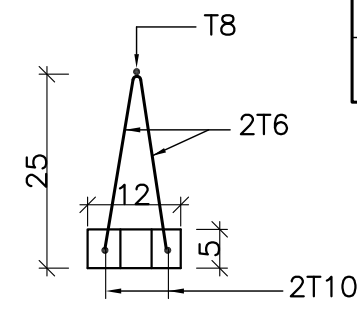
BEAM TYPE B-3

SC. H-1:75 V-1:20

NO.=3

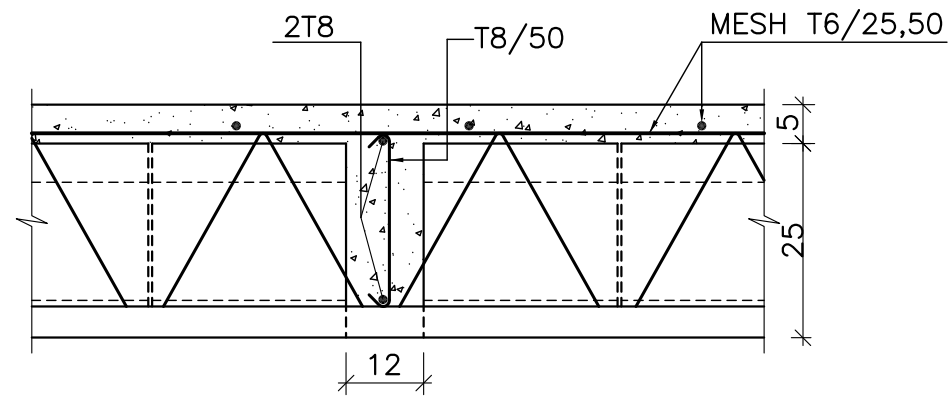


J-1



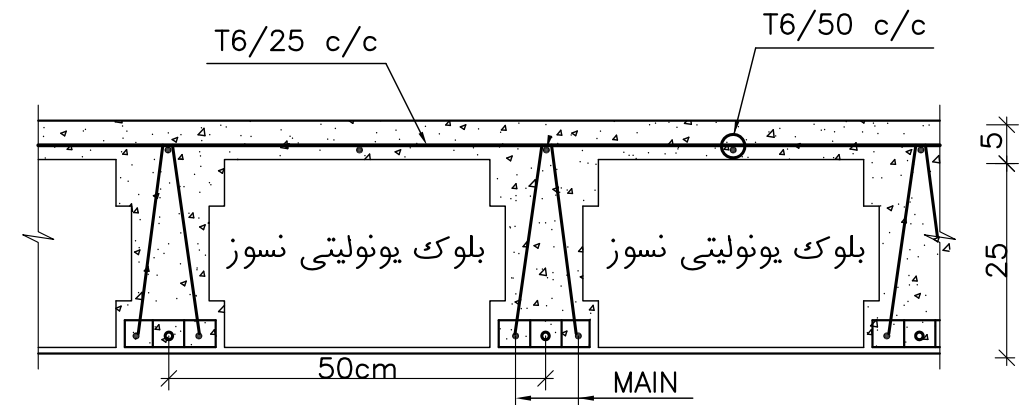
J-2

Pos	Ø	Shape	L/A	No.	T10	T16
1	T16	25 220	2.45	9		22.05
2	T16	25 315	3.4	6		20.4
3	T10	20 20 10	1	503	503	
4	T16	25 960	9.85	6		59.1
5	T16	25 950	9.75	9		87.75
6	T16	25 880 25	9.3	16		148.8
7	T16	190	1.9	4		7.6
TOTAL LENGTH OR AREA (m)					503	345.7
UNIT WEIGTH (Kg)					0.617	1.578
WEIGTH (Kg)					310.35	545.51
GRAND TOTAL (Kg)					856 Kg.	



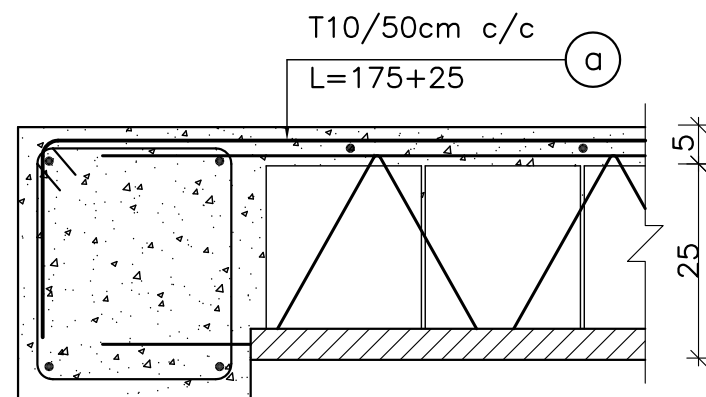
TYPICAL RIB SECTION

Sc.1/10



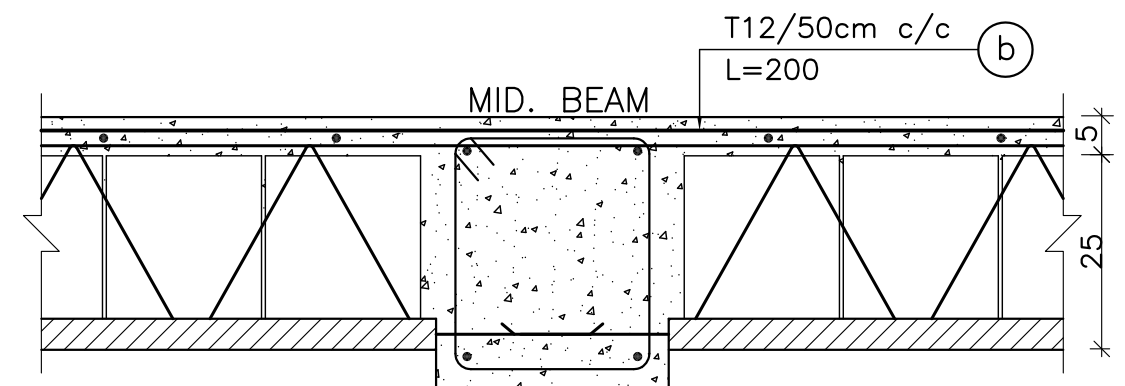
TYPICAL JOIST BLOCK

Sc.1/10



TYPICAL SEC. AT END BEAMS

Sc.1/10



TYPICAL SEC. AT MID. BEAMS

Sc.1/10

175
T10 (a) 25 for END BEAMS

200
T12 (b) for MID. BEAMS